

**CALIFORNIA REGIONAL WATER QUALITY  
CONTROL BOARD LAHONTAN REGION  
WASTE DISCHARGE REQUIREMENTS**

**Rancho Las Flores  
WDID 6B361018001**

04/11/1996

CALIFORNIA REGIONAL WATER QUALITY CONTROL BOARD  
LAHONTAN REGION

BOARD ORDER NO. 6-96-24  
WDID NO. 6B361018001

UPDATED WASTE DISCHARGE REQUIREMENTS

FOR

RANCHO LAS FLORES WASTEWATER RECYCLING SITE

San Bernardino County

The California Regional Water Quality Control Board, Lahontan Region (Regional Board) finds:

1. Discharger

Rancho Las Flores Limited Partnership recycles wastewater on Rancho Las Flores pastureland near the West Fork of the Mojave River. For the purposes of this Order, Rancho Las Flores Limited Partnership is referred to as the "Discharger."

2. Facility

Rancho Las Flores pastureland facilitates the regulated wastewater recycling project. For the purposes of this Order, Rancho Las Flores is referred to as the "Facility". Recycled secondary treated and disinfected wastewater is discharged at the pasture land site.

3. History of Previous Regulation by the Regional Board

The Regional Board previously established recycling requirements for the Facility under Order No. 6-73-56 which was adopted on May 24, 1973; Order No. 6-77-72 which was adopted on June 30, 1977, and Order No. 6-85-27 which was adopted on March 14, 1985.

Administrative Civil Liability Complaint (ACL) No. 6-93-38 dated April 19, 1993, in the proposed amount of \$13,500.00 was issued to Las Flores Ranch for an unconfined discharge of wastewater in violation of a Basin Plan Prohibition and the California Water Code. The Discharger settled the matter by payment of the proposed ACL amount on May 12, 1993.

4. Reason for Action

The Regional Board is updating waste discharge requirements as part of a periodic review of the requirements, to reflect a change of project ownership/operation from Summit Valley Ranch to Rancho Las Flores Limited Partnership, and to reflect a change in the name of the project from Summit Valley Ranch to Rancho Las Flores. The purpose of this Order is to formally regulate the discharge of recycled wastewater for the protection of water quality and to prevent the occurrence of a nuisance condition which could become associated with the recycling discharge.

5. Location

The Facility is located within the City of Hesperia at 15400 Highway 173 approximately 14 miles south of the City of Hesperia, proper, in Section 28, T3N, R4W, SBB&M in the Upper Mojave Hydrologic Area of the Mojave Hydrologic Unit as shown on Attachment "A", which is made part of this Order.

6. Description of Facility and Discharge

Recycled wastewater is discharged from three wastewater treatment facilities (WTFs) operated by the Crestline Sanitation District (CSD) and one WTF operated by the Pilot Rock Conservation Camp (PRCC). The three CSD-operated WTFs have the following respective design capacities: Huston Creek (0.7 mgd); Seeley Creek (0.5 mgd); and Cleghorn, serving the Silverwood Lake State Recreation Area (SRA), (0.2 mgd). The PRCC WTF design capacity is 0.01 mgd. All four WTFs discharge to the CSD combined outfall pipeline with a design average daily flow capacity of 5.0 mgd and a 7.5 mgd peak flow capacity. Recycled wastewater is first discharged from the outfall pipeline to 12 acres of land owned and controlled by CSD. The Facility regulated herein consists of an additional 500-acre pasture flood irrigation site. The pasture area consists of uncultivated grasses. Currently, beef cattle calving cows for breeding (approximately 400), and brood mare horses for horse racing (approximately 80) graze on the pastureland irrigated with recycled wastewater.

A combined annual average of 0.982 mgd of recycled wastewater from CSD and PRCC is applied by flood irrigation to the pastureland recycling area. Approximately 0.974 mgd of domestic wastewater from the CSD service area and the Silverwood Lake SRA is collected, treated to a secondary level, disinfected and discharged to the outfall pipeline. Approximately 0.008 mgd of domestic wastewater is collected by PRCC, treated to a secondary level, disinfected and discharged to the same outfall pipeline. The combined flow is discharged first to CSD land surrounding the outfall, and then the discharge flows onto the Las Flores Ranch owned recycling area. Due to infiltration and inflow problems in the CSD and Silverwood Lake SRA collection systems, the effluent flowrate to the site has previously reached as high as 3.0 mgd during limited seasonal precipitation events.

Two bermed storage ponds (2.6 acres of sand filters), located on 12 additional acres of CSD owned land, west of the outfall and upgradient of the irrigation area are for emergency use only by the CSD to prevent discharge to the West Fork of the Mojave River. The ponds were last used in 1978. The emergency storage ponds are operated by, and under the exclusive control of the CSD and are regulated under requirements issued to the CSD.

7. Authorized Disposal Site

The 500-acre pastureland area is the only authorized disposal site for wastewater. The authorized disposal site is located on land owned by Rancho Las Flores Limited Partnership.

8. Recycling Regulations

The quality of the recycled wastewater will conform to the discharge specifications contained in waste discharge requirements prescribed by the Regional Board for the CSD and PRCC.

The State Department of Health Services has established statewide recycling criteria for the use of recycled water for pasture irrigation. All effluent made available for recycling is to comply with standard Department of Health Services Recycling Requirements as specified in Chapter 3, Division 4, Title 22, California Code of Regulations.

In accordance with Section 13523 of the California Water Code, the Regional Board consulted with and received the recommendations of the State Department of Health Services concerning recycling requirements which are incorporated within this Order.

9. Site Geology

The land surface slopes on the site are convex and range from two to nine percent. The natural vegetation is mainly juniper, desert shrubs, and grasses. Soils at the recycling site are composed of the Avawatz-Oak Glen association consisting of sandy loam, formed in alluvium derived from granitic material with moderately rapid to rapid permeability. The surface layers of soil are approximately 15 to 22 inches of brown/gray sandy loam. The underlying soils are approximately 60 inches of brown/gray loamy sand. Erosion potential from water is slight or moderate.

10. Site Hydrology

The recycling site is located adjacent to the West Fork of the Mojave River. The spillway flow discharge of California Aqueduct water, when necessary, from the Cedar Springs Dam at Silverwood Lake occurs just west of the recycling site. The volume of the releases of aqueduct water from Silverwood Lake (pass through water) to the West Fork of the Mojave River is equivalent to the natural runoff volumes to the Lake, which would have previously been runoff to the West Fork of the Mojave River if the Lake were not intercepting the natural runoff flows. An amount of water equal to the first 23 second-feet of natural runoff flows, which represents the Rancho Las Flores' historic water right, is intercepted by the Lake. To compensate Rancho Las Flores for this interception, an equal amount of flow is diverted from the aqueduct system prior to the Lake and discharged to Rancho Las Flores. Local annual precipitation is approximately 6.5 inches.

11. Site Hydrogeology

Depth from the ground surface to ground water at the site ranges from two to fifteen feet. Ground water component flows consisting of natural ground water underflow and underflow seepage of California Aqueduct water from Silverwood Lake occur at the recycling site.

12. Receiving Waters

The receiving waters are the ground and surface waters of the Lahontan Hydrologic Basin, Mojave Hydrologic Unit, Upper Mojave Hydrologic Area (Department of Water Resources surface water Hydrologic Unit No. 628.20 and Basin No. 6-42 for the Upper Mojave River Valley Ground Water Basin).

13. Lahontan Basin Plan

The Regional Board adopted a Water Quality Control Plan for the Lahontan Basin (Basin Plan) on March 31, 1995 and this Order implements the Basin Plan as amended.

14. Beneficial Uses of Ground Water

The beneficial uses of the ground waters of the Lahontan Hydrologic Basin, Upper Mojave River Valley Ground Water Basin as set forth and defined in the Basin Plan are:

- a. municipal and domestic supply
- b. agricultural supply
- c. industrial service supply
- d. freshwater replenishment
- e. aquaculture

15. Beneficial Uses of Surface Water

The beneficial uses of the surface waters of the Lahontan Hydrologic Basin, Mojave Hydrologic Unit, West Fork of the Mojave River and Upper Mojave Hydrologic Area as set forth and defined in the Basin Plan are:

- a. municipal and domestic supply
- b. agricultural supply
- c. ground water recharge
- d. hydropower generation
- e. water-contact recreation
- f. non-contact water recreation
- g. commercial and sport fishing
- h. warm freshwater habitat
- i. cold freshwater habitat
- j. wildlife habitat

16. Constituents of Concern and Monitoring Parameters

Monitoring of effluent quality is conducted by CSD and PRCC under separate waste discharge requirements.

17. California Environmental Quality Act Compliance

These recycling requirements govern an existing facility which the recycled wastewater reuser is currently operating. The project consists only of the continued use of recycled wastewater governed by these recycling requirements and is therefore exempt from the provisions of the California Environmental Quality Act (Public Resources Code Section 21000 et seq.) in accordance with Section 15301, Chapter 3, Title 14, California Code of Regulations.

18. Notification of Interested Parties

The Regional Board has notified the Discharger and interested parties of its intent to update waste discharge requirements for the discharge.

19. Consideration of Public Comments

The Regional Board, in a public meeting, heard and considered all comments pertaining to the discharge.

**IT IS HEREBY ORDERED** that the Discharger shall comply with the following:

I. DISCHARGE SPECIFICATIONS

A. Recycling Requirements

1. The irrigation site shall be managed and operated in a manner to prevent persistent ponding of wastewater which is capable of promoting the breeding of mosquitoes.
2. The irrigation site shall be properly fenced and posted to restrict public access and warn of the presence of sewage.

B. Receiving Water Limitations

The discharge of waste, as a result of activities at Rancho Las Flores, shall not cause the presence of the following substances or conditions in surface or ground waters of the Mojave Hydrologic Unit, West Fork of the Mojave River, Upper Mojave Hydrologic Area, and Mojave River Valley Ground Water Basin.

1. Any perceptible color, odor, taste or foaming.
2. Coliform organisms attributable to human wastes.
3. Toxic substances in concentrations that individually, collectively, or cumulatively cause detrimental physiological responses in human, plants, animals, or aquatic life.

4. Identifiable chlorinated hydrocarbons, organophosphates, carbamates, and other pesticide and herbicide groups, in summations, in excess of the lowest detectable levels.
5. Concentrations of chemical constituents in excess of the maximum contaminant levels or secondary maximum contaminant levels based upon drinking water standards specified by the more restrictive of the California Code of Regulations, Title 22, Division 4, Chapter 15, or 40 CFR, Part 141.

C. General Requirements and Prohibitions

1. Surface flow or visible discharge of sewage or recycled wastewater at, or from, the authorized disposal site to adjacent land areas or surface waters is prohibited.
2. The vertical distance between the liquid surface elevation and the lowest point of a pond dike or the invert of an overflow structure shall not be less than two (2) feet.
3. The discharge shall not cause a nuisance as defined in Section 13050 of the California Water Code.
4. The discharge of treated wastewater, except to the authorized wastewater recycling site, is prohibited.

II. PROVISIONS

A. Rescission of Waste Discharge Requirements

Board Order No. 6-85-27 is hereby rescinded.

B. Standard Provisions

The Discharger shall comply with the "Standard Provisions for Waste Discharge Requirements," dated September 1, 1994, in Attachment "B.", which is made part of this Order, with the exception of references to treatment and/or treatment facilities.

C. Monitoring and Reporting

No monitoring and reporting is required by the Discharger. Monitoring of the quality and quantity of effluent used at the recycling site, the quality of surface water in the West Fork of the Mojave River, and the quality of ground water beneath and in the vicinity of the recycling site, is conducted by CSD and/or PRCC.

I, Harold J. Singer, Executive Officer, do hereby certify that the foregoing is a full, true, and correct copy of an Order adopted by the California Regional Water Quality Control Board, Lahontan Region, on April 11, 1996.

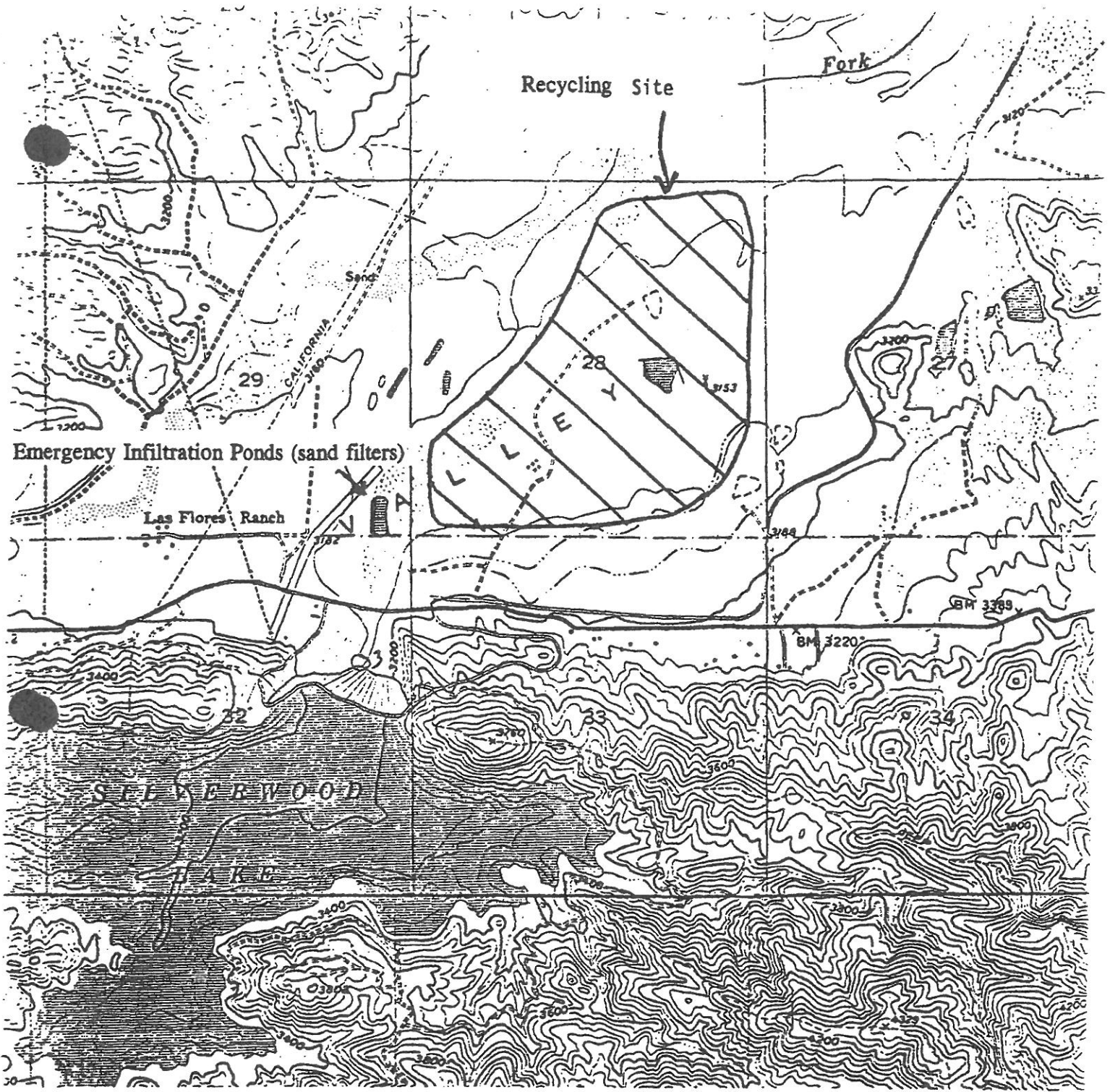


---

HAROLD J. SINGER  
EXECUTIVE OFFICER

- Attachments: A. Location Map  
B. Standard Provisions for Waste Discharge Requirements





**ATTACHMENT "A"**

**RANCHO LAS FLORES LIMITED PARTNERSHIP**

**RANCHO LAS FLORES WASTEWATER RECYCLING SITE**

**Within Annexed Portion of City of Hesperia, South of Hesperia, Proper  
San Bernardino County**

**Portion of Section 28, T3N, R4W, SBB&M**

**USGS Silverwood Lake 7.5 Minute Quadrangle**

Attachment "B"

CALIFORNIA REGIONAL WATER QUALITY CONTROL BOARD  
LAHONTAN REGION

**STANDARD PROVISIONS**  
**FOR WASTE DISCHARGE REQUIREMENTS**

1. **Inspection and Entry**

The discharger shall permit Regional Board staff:

- a. to enter upon premises in which an effluent source is located or in which any required records are kept;
- b. to copy any records relating to the discharge or relating to compliance with the waste discharge requirements;
- c. to inspect monitoring equipment or records; and
- d. to sample any discharge.

2. **Reporting Requirements**

- a. Pursuant to California Water Code 13267(b), the discharger shall immediately notify the Regional Board by telephone whenever an adverse condition occurred as a result of this discharge; written confirmation shall follow within two weeks. An adverse condition includes, but is not limited to, spills of petroleum products or toxic chemicals, or damage to control facilities that could affect compliance.
- b. Pursuant to California Water Code Section 13260 (c), any proposed material change in the character of the waste, manner or method of treatment or disposal, increase of discharge, or location of discharge, shall be reported to the Regional Board at least 120 days in advance of implementation of any such proposal. This shall include, but not be limited to, all significant soil disturbances.
- c. The owner(s) of, and discharger upon, property subject to waste discharge requirements shall be considered to have a continuing responsibility for ensuring compliance with applicable waste discharge requirements in the operations or use of the owned property. Pursuant to California Water Code Section 13260(c), any change in the ownership and/or operation of property subject to the waste discharge requirements shall be reported to the Regional Board. Notification of applicable waste discharge requirements shall be furnished in writing to the new owners and/or operators and a copy of such notification shall be sent to the Regional Board.
- d. If a discharger becomes aware that any information submitted to the Regional Board is incorrect, the discharger shall immediately notify the Regional Board, in writing, and correct that information.

8. Property Rights

The waste discharge requirements do not convey any property rights of any sort, or any exclusive privileges, nor does it authorize any injury to private property or any invasion of personal rights, nor any infringement of federal, state or local laws or regulations.

9. Enforcement

The California Water Code provides for civil liability and criminal penalties for violations or threatened violations of the waste discharge requirements including imposition of civil liability or referral to the Attorney General.

10. Availability

A copy of the waste discharge requirements shall be kept and maintained by the discharger and be available at all times to operating personnel.

11. Severability

Provisions of the waste discharge requirements are severable. If any provision of the requirements is found invalid, the remainder of the requirements shall not be affected.

12. Public Access

General public access shall be effectively excluded from treatment and disposal facilities.

13. Transfers

Providing there is no material change in the operation of the facility, this Order may be transferred to a new owner or operation. The owner/operator must request the transfer in writing and receive written approval from the Regional Board Executive Officer.

14. Definitions

- a. "Surface waters" as used in this Order, include, but are not limited to, live streams, either perennial or ephemeral, which flow in natural or artificial water courses and natural lakes and artificial impoundments of waters. "Surface waters" does not include artificial water courses or impoundments used exclusively for wastewater disposal.
- b. "Ground waters" as used in this Order, include, but are not limited to, all subsurface waters being above atmospheric pressure and the capillary fringe of these waters.

07/17/1997

CALIFORNIA REGIONAL WATER QUALITY CONTROL BOARD  
LAHONTAN REGION

**BOARD ORDER NO. 6-96-24A1**  
**WDID NO. 6B361018001**

WATER RECYCLING REQUIREMENTS

FOR

**RANCHO LAS FLORES**  
**WASTEWATER RECYCLING<sup>1</sup> SITE**

San Bernardino County

The California Regional Water Quality Control Board, Lahontan Region (Regional Board) finds:

1. Water Recycler

Rancho Las Flores Limited Partnership (RLF) recycles wastewater on pastureland near the West Fork of the Mojave River. For the purposes of this Amendment, RLF is referred to as the "Water Recycler."

2. Facility

RLF pastureland facilitates the regulated wastewater recycling project. For the purposes of this Amendment, RLF pastureland is referred to as the "Facility". The Recycled secondary treated and disinfected wastewater is discharged at the pastureland site.

3. History of Previous Regulation by the Regional Board

The Regional Board previously established Water Recycling Requirements (WRRs) for the Facility under Board Order No. 6-96-24, which was adopted on April 11, 1996.

4. Reasons for Action

The Regional Board is amending WRRs to incorporate a proposed 325-acre areal expansion into the authorized recycling site, and to authorize spray irrigation within a portion of the expanded recycling area.

5. Facility Location

The Facility is located within the City of Hesperia at 15400 Highway 173 approximately 14 miles south of the City of Hesperia, proper, in portions of Sections 22, 27, 28, and 33, T3N, R4W, SBB&M in the Upper Mojave Hydrologic Area of the Mojave Hydrologic Unit as shown on amended Attachment "A", which is made part of the amended Order.

<sup>1</sup> The terms "wastewater recycling" are used herein for consistency with Board Order No. 6-96-24 which is being amended. For consistency with current regulatory terminology, "wastewater recycling," as used herein, is equivalent to "water recycling."

6. Ground Water Monitoring Requirements

Board Order No. 6-96-24 requires the Water Recycler to conduct ground water monitoring as a component of the project. The Water Recycler has demonstrated that the existing monitoring system adequately monitors the Facility, including the expansion area.

7. CEQA Compliance

On January 18, 1990 the City of Hesperia certified a final Environmental Impact Report (EIR) for the project, in accordance with the California Environmental Quality Act (CEQA), (Public Resources Code, Section 21000 et seq.), which includes the proposed expansion area. The Regional Board, as a responsible agency for CEQA, has considered the EIR prepared by the City of Hesperia.

8. Notification of Interested Parties

The Board has notified the Water Recycler and interested parties of its intent to amend WRRs for the Discharge.

9. Consideration of Public Comments

The Board, in a public hearing, heard and considered all comments pertaining to this discharge.

**IT IS HEREBY ORDERED THAT:**

I. The Findings of Board Order No. 6-96-24 be amended to include the following:

5. Location

The Facility is located within the City of Hesperia at 15400 Highway 173 approximately 14 miles south of the City of Hesperia, proper, in portions of Sections 22, 27, 28, and 33, T3N, R4W, SBB&M in the Upper Mojave Hydrologic Area of the Mojave Hydrologic Unit as shown on Attachment "A", which is made part of this Order.

6. Description of Facility and Discharge

Recycled wastewater is discharged from three Wastewater Treatment Facilities (WTFs) operated by the Crestline Sanitation District (CSD) and one WTF operated by the Pilot Rock Conservation Camp (PRCC). The three CSD-operated WTFs have the following respective design capacities: Huston Creek (0.7 mgd); Seeley Creek (0.5 mgd); and Cleghorn, serving the Silverwood Lake State Recreation Area (SRA), (0.2 mgd).



The PRCC WTF design capacity is 0.01 mgd. All four WTFs discharge to the CSD combined outfall pipeline with a design average daily flow capacity of 5.0 mgd and a 7.5 mgd peak flow capacity. Recycled wastewater is first discharged from the outfall pipeline to 6 acres of land owned and controlled by CSD. The Facility regulated herein consists of an additional 500-acre pasture flood irrigation site currently flood irrigated and 325 acres of pastureland now proposed for future flood and/or spray irrigation with recycled wastewater. The pasture area consists of uncultivated grasses. Currently, beef cattle calving cows for breeding (approximately 400), and brood mare horses for horse racing (approximately 80) graze on the pastureland irrigated with recycled wastewater.

A combined annual average of 0.982 mgd of recycled wastewater from CSD and PRCC is applied by flood irrigation to the currently operated pastureland recycling area. Approximately 0.974 mgd of domestic wastewater from the CSD service area and the Silverwood Lake SRA is collected, treated to a secondary level, disinfected and discharged to the outfall pipeline. Approximately 0.008 mgd of domestic wastewater is collected by PRCC, treated to a secondary level, disinfected and discharged to the same outfall pipeline. The combined flow is discharged first to CSD land surrounding the outfall, and then the discharge flows onto the Las Flores Ranch-owned recycling area. Due to infiltration and inflow in the CSD and Silverwood Lake SRA collection systems, the effluent flowrate to the site has previously reached as high as 3.0 mgd during limited seasonal precipitation events. The proposed expansion of the recycling area does not include any specifically proposed increase in flow.

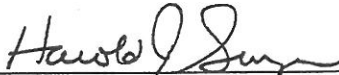
Two bermed storage ponds (2.6 acres of sand filters), located on 12 additional acres of CSD-owned land, west of the outfall and upgradient of the RLF irrigation area are for emergency use only by the CSD to prevent discharge to the West Fork of the Mojave River. The ponds were last used in 1978. Incidental flood irrigation occurs on the 6-acres of CSD-owned land around the CSD-owned wastewater outfall as the flow traverses the property to the RLF irrigation site. The combined total of 18 acres of CSD-owned land including the emergency storage ponds and incidental irrigation area are operated by, and under the exclusive control of the CSD. The wastewater discharge on the 18-acre CSD-owned site is regulated under separate waste discharge requirements. Those requirements are not affected by this Amendment.

7. Authorized Wastewater Recycling Site

The primary 825-acre pastureland area (current 500-acre pastureland plus the proposed 325-acre pastureland expansion area) is the only authorized wastewater recycling site for recycled wastewater. The portion of the primary site authorized for spray irrigation is limited to the area located south of the existing canal within the proposed expanded wastewater recycling area as indicated on Attachment "A", the amended location map. The authorized wastewater recycling site is located on land owned by RLF.

II. There are no other changes or additions to Board Order No. 6-96-24 with the exception of regulatory terminology whereby these requirements are now referred to as water recycling requirements as described in Footnote No. 1 on page one of this Amendment.

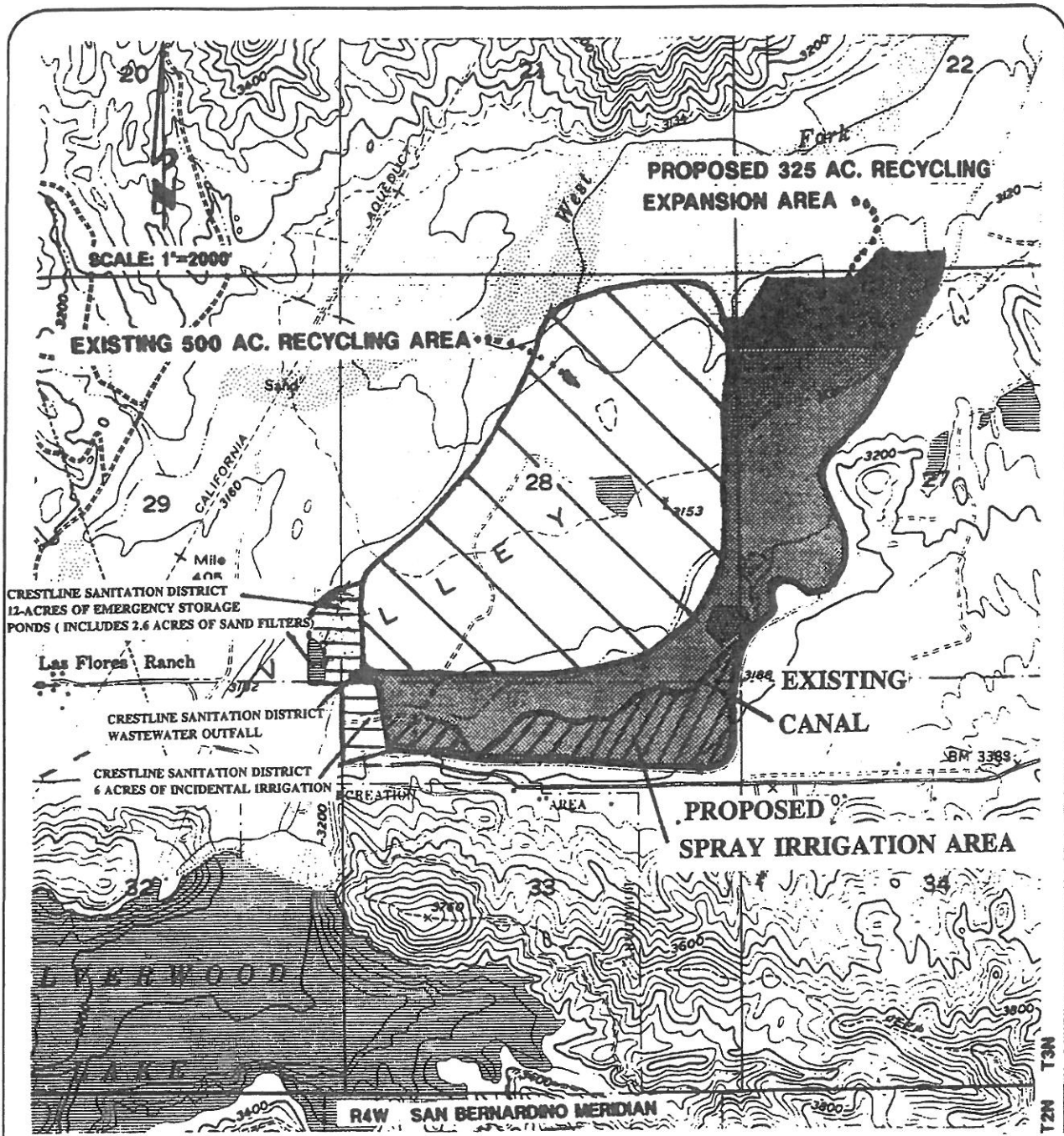
I, Harold J. Singer, do hereby certify that the foregoing is a full, true, and correct copy of an Amendment adopted by the California Regional Water Quality Control Board, Lahontan Region, on July 17, 1997.



---

HAROLD J. SINGER  
EXECUTIVE OFFICER

Attachment: A. Amended Location Map



AMENDED  
ATTACHMENT "A"

RANCHO LAS FLORES LIMITED PARTNERSHIP  
RANCHO LAS FLORES WASTEWATER RECYCLING SITE

WITHIN CITY OF HESPERIA  
COUNTY OF SAN BERNARDINO

Portions of Sections 22, 27, 28 and 33, T3N, R4W, SBB&M

USGS Silverwood Lake 7.5 Minute Quadrangle, Photo-revised 1988