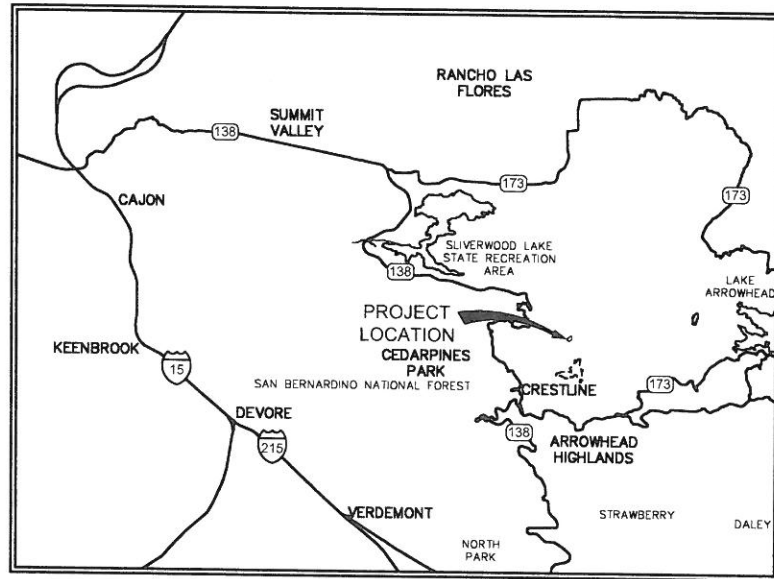
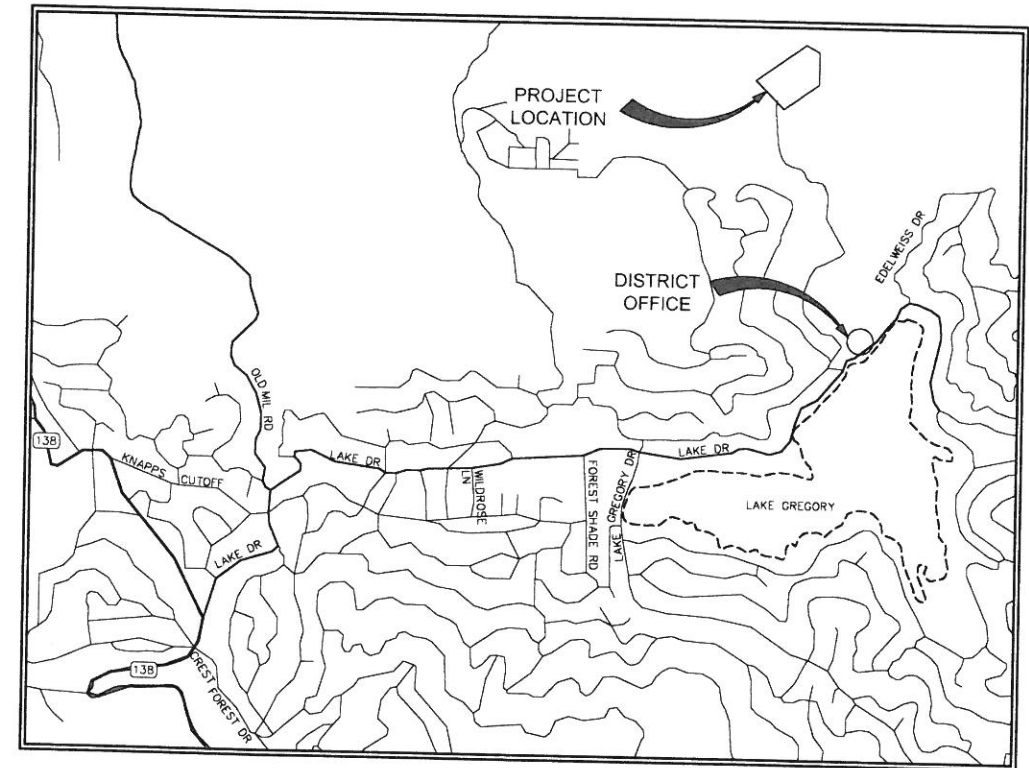


# Crestline Sanitation District

## CONSTRUCTION PLANS FOR HUSTON CREEK WWTP PRIMARY CLARIFIER AND DEWATERING BUILDING IMPROVEMENTS



**VICINITY MAP**  
NOT TO SCALE



**LOCATION MAP**  
NOT TO SCALE

PROJECT ADDRESS:  
24516 LAKE DR  
CRESTLINE, CA. 92352

### DECLARATION OF RESPONSIBLE CHARGE

I HEREBY DECLARE THAT I AM THE ENGINEER OF WORK FOR THIS PROJECT, THAT I HAVE EXERCISED RESPONSIBLE CHARGE OVER THE DESIGN OF THE PROJECT AS DEFINED IN SECTION 6703 OF THE BUSINESS AND PROFESSIONS CODE AND THAT THE DESIGN IS CONSISTENT WITH CURRENT STANDARDS.

I UNDERSTAND THAT THE CHECK OF PROJECT DRAWINGS AND SPECIFICATIONS BY THE CRESTLINE SANITATION DISTRICT IS CONFINED TO REVIEW ONLY AND DOES NOT RELIEVE ME, AS ENGINEER OF WORK, OF MY RESPONSIBILITIES FOR PROJECT DESIGN.

DUDEK 605 THIRD ST ENCINITAS, CA. 92024

PHILLIP J. GIORI R.C.E. 87516 DATE  
EXPIRES 9/30/2021

APPROVED:

CRESTLINE SANITATION DISTRICT DATE

### CONTACT INFORMATION

CRESTLINE SANITATION DISTRICT	RICK DEVER	(909) 338-1751
DUDEK	PHIL GIORI	(760) 479-4173
SOUTHERN CALIFORNIA EDISON (SCE)	RACHAEL GATES	(909) 336-4220



CALL TOLL FREE  
**1-800-227-2600**

TWO  
WORKING DAYS  
BEFORE YOU  
DIG

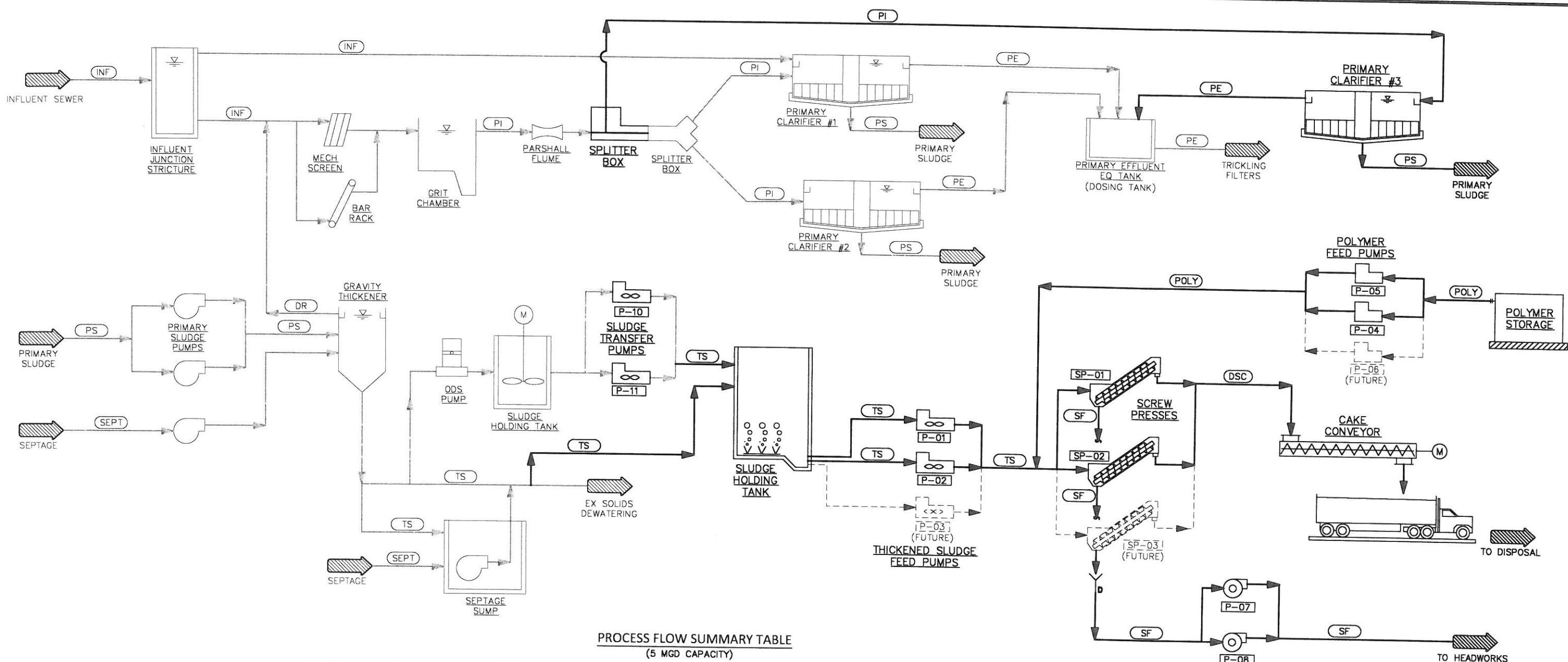
Underground Service Alert  
of Southern California

60% PROGRESS SET  
NOT FOR CONSTRUCTION

REV	DESCRIPTION	ENGR	DATE	APPD	DATE	PROGRESS: 60% SUBMITTAL		<b>DUDEK</b> 605 Third Street Encinitas, CA 92024 760.942.5147 Fax 760.632.0164		Crestline Sanitation District 24516 Lake Drive, (P.O. Box 3395) Crestline, California 92325-3395 909.338.1751 Fax 909.338.5306	CRESTLINE SANITATION DISTRICT <b>HUSTON CREEK WWTP PRIMARY CLARIFIER AND DEWATERING BUILDING IMPROVEMENTS</b>	<b>G-1</b> PROJECT NO. 11652
						SUBMITTAL DATE: JANUARY 2020 PROJECT MANAGER: P. GIORI DESIGNED BY: P. GIORI DRAWN BY: N. HUNTER CHECKED BY: N. HARPER						

P:\101.Engineering\Crestline SD\11652 - Huston Creek Dewatering Bldg\06.CAD\11652 Shot G-1 1/17/2020 10:59 AM

P:\101.Engineering\Crestline SD\11652 - Houston Creek Dewatering Bldg\06.CAD\11652 SH06 G-6 1/17/2020 11:10 AM



**PROCESS FLOW SUMMARY TABLE**  
(5 MGD CAPACITY)

PROCESS ABBREVIATION	DESCRIPTION	CONCENTRATION	AVERAGE FLOW	INSTANTANEOUS FLOW	PRESSURE	NOTES
INF	INFLUENT WASTEWATER	260 MG/L TSS	0.7 MGD	1389 GPM	GRAVITY PSI	INFLUENT SEWER
PI	PRIMARY INFLUENT	260 MG/L TSS	0.7 MGD	1389 GPM	GRAVITY PSI	HEADWORKS TO PRIMARY CLARIFIERS
PE	PRIMARY EFFLUENT	60 MG/L TSS	0.7 MGD	1389 GPM	GRAVITY PSI	PRIMARY CLARIFIERS TO TRICKLING FILTERS
PS	PRIMARY SLUDGE	2 %DS	9,000 GPD	TBD GPM	TBD PSI	PRIMARY CLARIFIERS TO GRAVITY THICKENER
SC	SCUM	TBD %DS	- GPD	TBD GPM	GRAVITY PSI	PRIMARY CLARIFIERS TO GRAVITY THICKENER
TFS	TRICKLING FILTER SLUDGE	0.3 %DS	TBD GPD	TBD GPM	TBD PSI	SECONDARY CLARIFIERS TO GRAVITY THICKENER
SEPT	SEPTAGE	TBD %DS	- GPD	TBD GPM	TBD PSI	SEPTAGE RECEIVING TO GRAVITY THICKENER
TS	THICKENED SLUDGE	3 %DS	38,400 GAL/WK	15-25 GPM	TBD PSI	GT TO SLUDGE HOLDING TANK TO DEWATERING
DSC	DEWATERED SLUDGE CAKE	25-35 %DS	13,300 DRY-LBS/WK	833 DRY-LBS/HR	N/A	CONVEYOR TO LOADING TRUCK
NPOLY	NEAT EMULSION POLYMER	40 % ACTIVE	45 GAL/WK	2.6 GPH	TBD PSI	POLYMER STORAGE TO POLYMER SYSTEM
W	POTABLE WATER	-	- GAL/WK	18 GPM	TBD PSI	POTABLE WATER
POLY	MADE-DOWN POLYMER	0.0025 lb/lb	- GAL/WK	18 GPM	TBD PSI	POLYMER SYSTEM TO SCREW PRESS FEED LINE
WW	WASH WATER	-	- GPD	135 GPM	75 PSI	SCREW PRESS WASHWATER
A	AIR	-	- SCFM	1.2 SCFM	87 PSI	SCREW PRESS
DR	DRAINAGE	650 MG/L TSS	87,000 GAL/WK	150 GPM	TBD PSI	DRAINAGE RETURN TO HEADWORKS

60% PROGRESS SET  
NOT FOR CONSTRUCTION

REV	DESCRIPTION	ENGR DATE	APPD DATE

PROGRESS: 60% SUBMITTAL  
 SUBMITTAL DATE: JANUARY 2020  
 PROJECT MANAGER: P. GIORI  
 DESIGNED BY: P. GIORI  
 DRAWN BY: N. HUNTER  
 CHECKED BY: N. HARPER



PLANS PREPARED BY:  
**DUDEK**  
 605 Third Street Encinitas, CA 92024  
 760.942.5147 Fax 760.632.0164



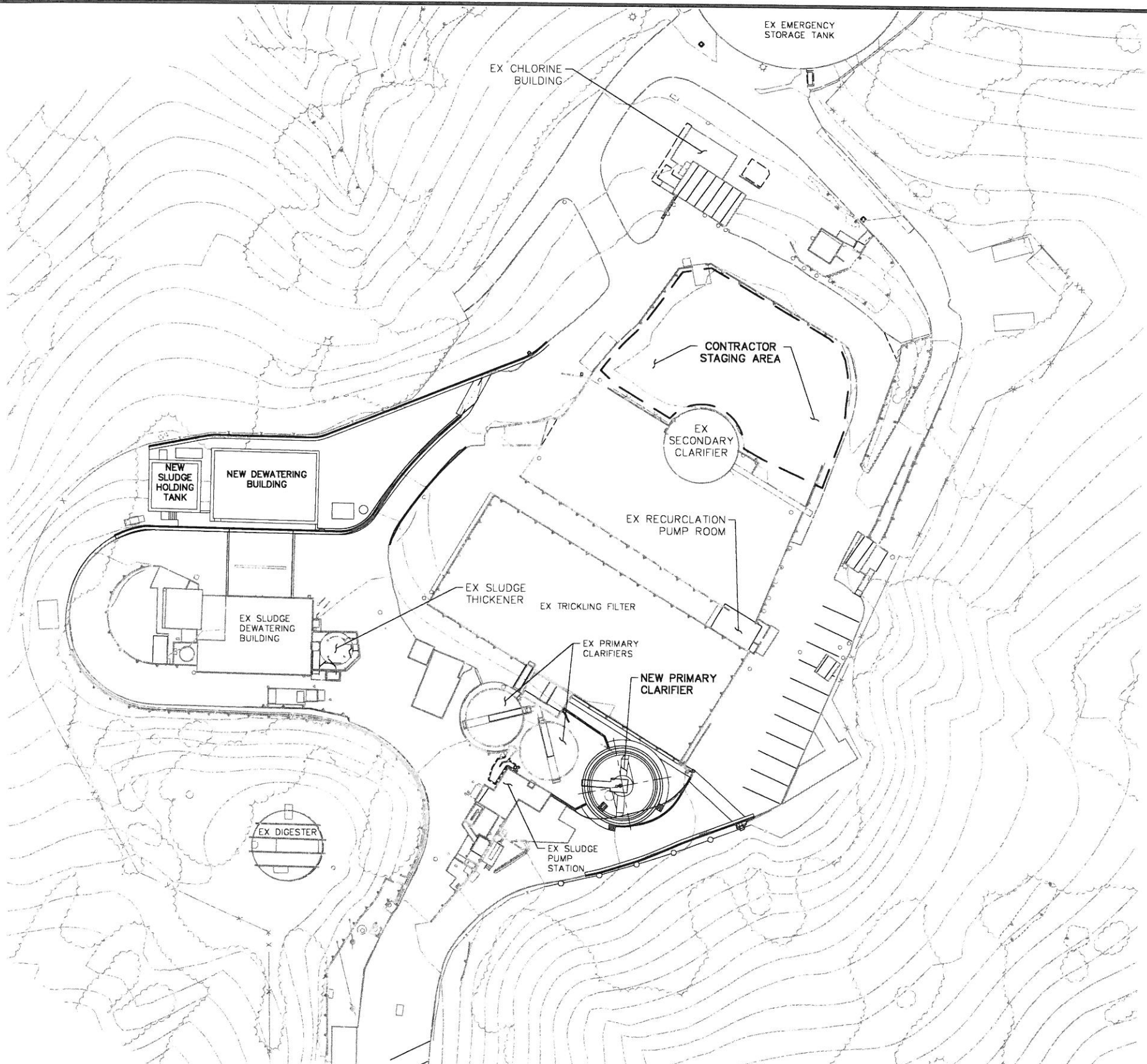
Crestline Sanitation District  
 24516 Lake Drive, (P.O. Box 3395)  
 Crestline, California 92325-3395  
 909.338.1751 Fax 909.338.5306

CRESTLINE SANITATION DISTRICT  
**HUSTON CREEK WWTP PRIMARY CLARIFIER AND DEWATERING BUILDING IMPROVEMENTS**

**G-6**  
 PROJECT NO.  
 11652  
 DWG. NO. 6 OF 145

PROCESS FLOW DIAGRAM

P:\101.Engineering\Crestline SD\11652 - Huston Creek Dewatering Bldg\06.CAD\11652\_SH17\_C-1 1/17/2020 12:25 PM



**PLAN**  
SCALE: 1" = 30'



GRAPHIC SCALE  
0 30' 60'  
SCALE: 1" = 30'

60% PROGRESS SET  
NOT FOR CONSTRUCTION

REV	DESCRIPTION	ENGR	DATE	APPD	DATE

PROGRESS: 60% SUBMITTAL  
 SUBMITTAL DATE: JANUARY 2020  
 PROJECT MANAGER: P. GIORI  
 DESIGNED BY: P. GIORI  
 DRAWN BY: N. HUNTER  
 CHECKED BY: N. HARPER



PLANS PREPARED BY:  
**DUDEK**  
 605 Third Street Encinitas, CA 92024  
 760.942.5147 Fax 760.632.0164



Crestline Sanitation District  
 24516 Lake Drive, (P.O. Box 3395)  
 Crestline, California 92325-3395  
 909.338.1751 Fax 909.338.5306

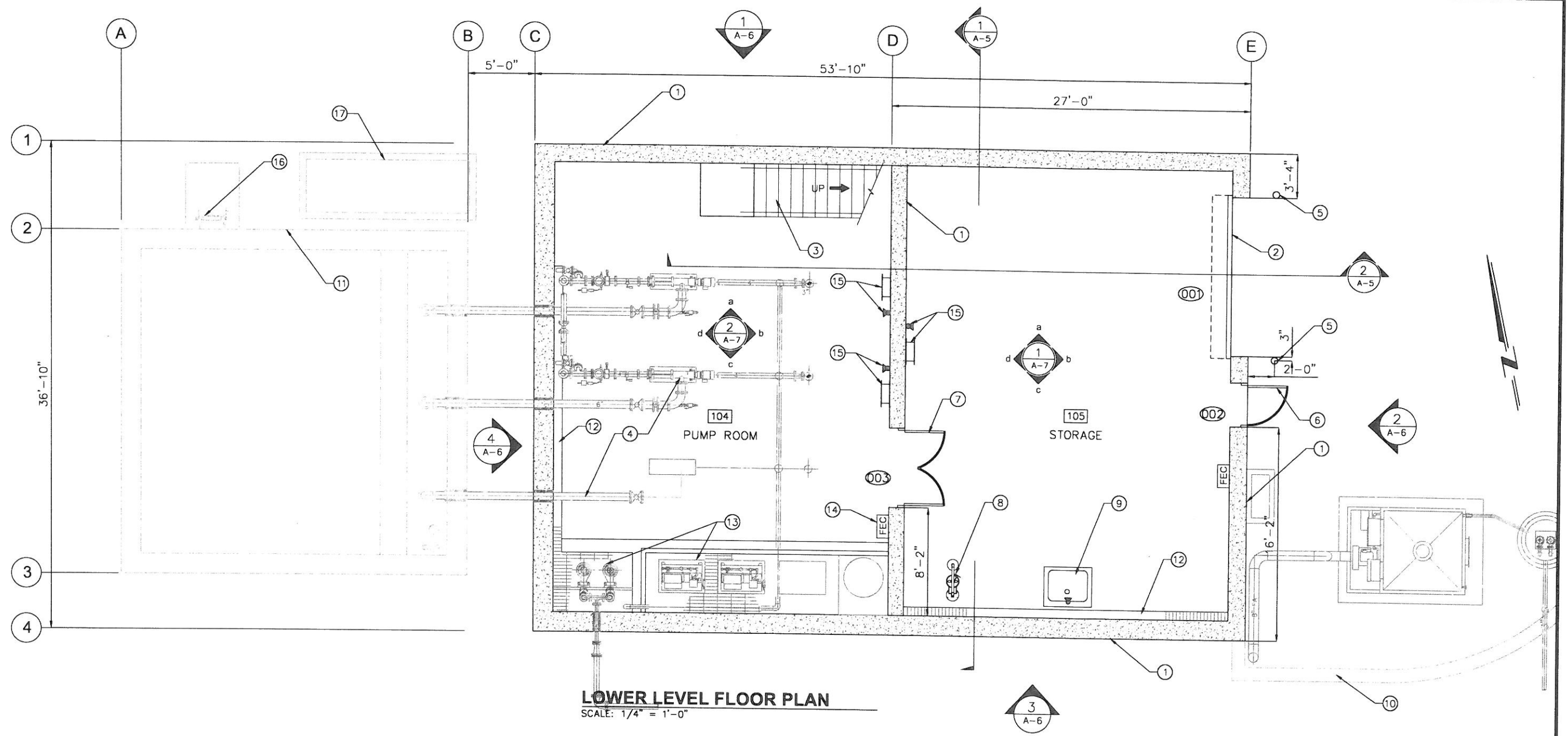
CRESTLINE SANITATION DISTRICT  
**HUSTON CREEK WWTP PRIMARY CLARIFIER AND DEWATERING BUILDING IMPROVEMENTS**

**OVERALL SITE PLAN AND CONTRACTOR STAGING AREA**

**C-1**  
 PROJECT NO. 11652  
 DWG. No. 17 of 145



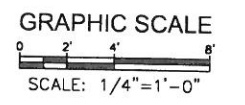
c:\mhn\_group\projects\1904-Crestline-Houston-Creek\Drawings\11652-X-ARCH-PLANS-SET 1/27/2020 3:20 PM



**LOWER LEVEL FLOOR PLAN**  
SCALE: 1/4" = 1'-0"

**KEY NOTES:**

- ① CONCRETE WALL -SEE STRUCTURAL DRAWINGS-TYP.
- ② POWER OPERATED OVERHEAD COILING DOOR- TYP.
- ③ STAIR WITH RAILING ON BOTH SIDES, SEE STRUCTURAL DRAWINGS- TYP.
- ④ EQUIPMENT SEE MECHANICAL DRAWINGS FOR LAYOUT- TYP.
- ⑤ CONCRETE FILLED METAL BOLLARD- TYP.
- ⑥ 3'-0 X 7'-0" HOLLOW METAL DOOR ON METAL FRAME- TYP.
- ⑦ 6'-0 X 7'-0" PAIR HOLLOW METAL DOOR ON METAL FRAME- TYP.
- ⑧ EMERGENCY SHOWER/EYEWASH-TYP.
- ⑨ SINK, SEE PLUMBING PLAN
- ⑩ RETAINING WALL, SEE STRUCTURAL DRAWINGS
- ⑪ SLUDGE HOLDING TANK, SEE STRUCTURAL DRAWINGS
- ⑫ TRENCH, SEE MECHANICAL/ STRUCTURAL DRAWINGS
- ⑬ EQUIPMENT WELL WITH CONCRETE CURB AND GRATE, SEE MECHANICAL/ STRUCTURAL DRAWINGS
- ⑭ SURFACE MOUNTED FIRE EXTINGUISHER IN CABINET-TYP.
- ⑮ HOSE BIB AND HOSE RACK, SEE MECHANICAL DRAWINGS-TYP.
- ⑯ LADDER, SEE STRUCTURAL DRAWINGS
- ⑰ MECHANICAL UNIT, SEE MECHANICAL DRAWINGS



PRELIMINARY DESIGN  
NOT FOR CONSTRUCTION

REV	DESCRIPTION	ENGR	DATE	APPD	DATE

PROGRESS: 60% SUBMITTAL  
SUBMITTAL DATE: JAN 2020  
PROJECT MANAGER: P. GIORI  
DESIGNED BY: M. NGUYEN  
DRAWN BY: A. RODRIGUEZ  
CHECKED BY: M. NGUYEN



PLANS PREPARED BY:  
**MBN GROUP**  
1701 California Drive  
Costa Mesa, CA 92626  
Tel: 949.441.1999  
Fax: 949.441.1998



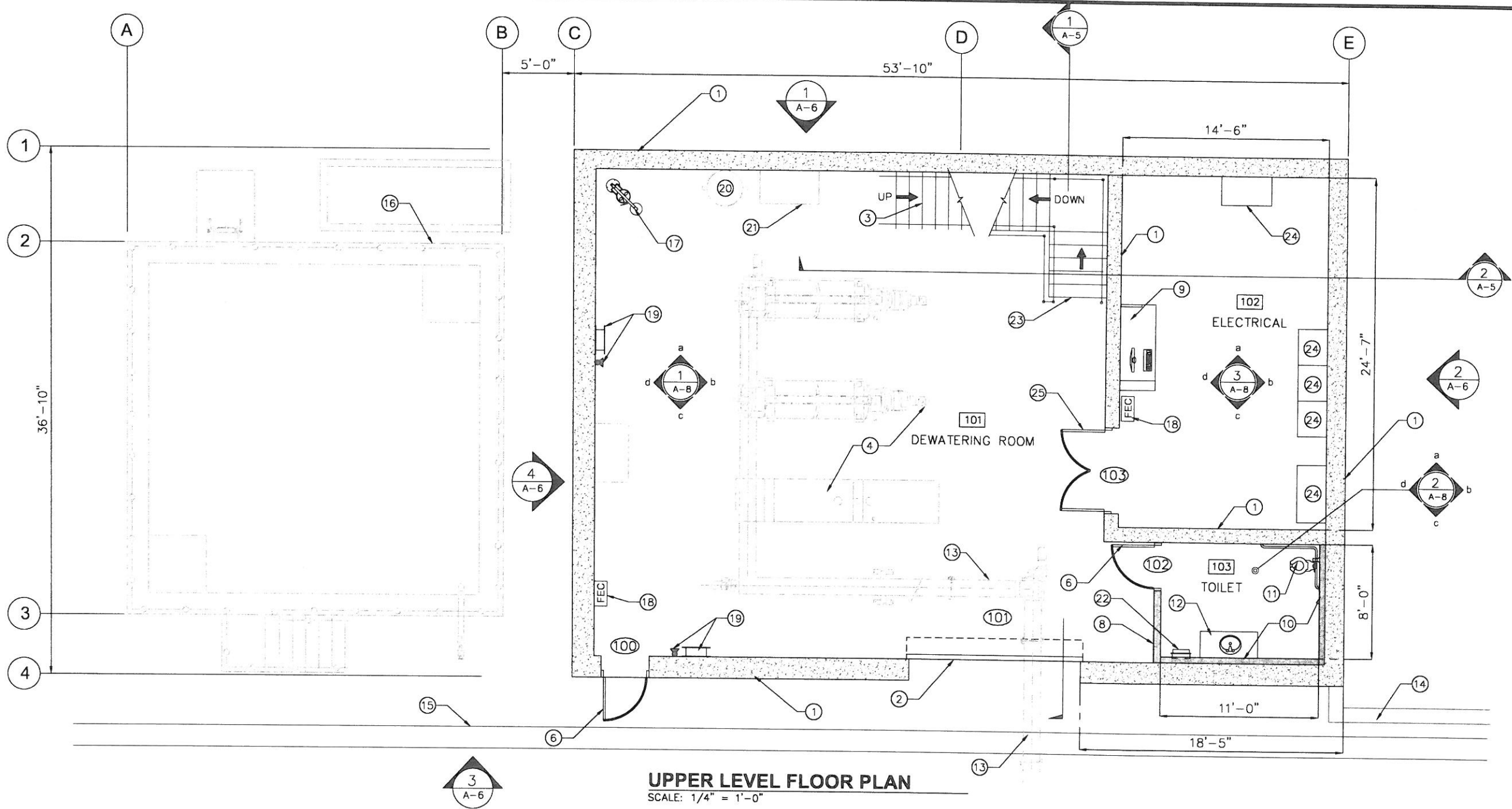
**Crestline Sanitation District**  
24516 Lake Drive, (P.O. Box 3395)  
Crestline, California 92325-3395  
909.338.1751 Fax 909.338.5306

CRESTLINE SANITATION DISTRICT  
**HUSTON CREEK WWTP PRIMARY CLARIFIER  
AND DEWATERING BUILDING IMPROVEMENTS**

DEWATERING BUILDING  
LOWER LEVEL FLOOR PLAN

**A-1**  
PROJECT NO.  
11652  
DWG. NO. 28 of 145

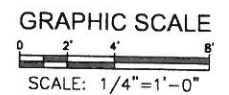
C:\MBN GROUP\PROJECTS\1904-Crestline-Houston-Creek\Design\Drawings\11652 X-ARCH-PLANS SET 1/27/2020 3:20 PM



**UPPER LEVEL FLOOR PLAN**  
SCALE: 1/4" = 1'-0"

**KEY NOTES:**

- ① CONCRETE WALL -SEE STRUCTURAL DRAWINGS-TYP.
- ② POWER OPERATED OVERHEAD COILING DOOR- TYP.
- ③ STAIR WITH RAILING BOTH SIDE TO STORAGE ABOVE, SEE STRUCTURAL DRAWINGS
- ④ EQUIPMENT SEE MECHANICAL DRAWINGS- TYP.
- ⑤ NOT USED
- ⑥ 3'-0 X 7'-0" HOLLOW METAL DOOR ON METAL FRAME- TYP.
- ⑦ 42" HIGH GUARD RAILING AT EDGE OF OPENING- TYP.
- ⑧ 3-5/8" METAL STUD WALL WITH GYPSUM BOARD EA. SIDE. PROVIDE W.R. BOARD @ TOILET SIDE- TYP.
- ⑨ CABINET- TYP.
- ⑩ 5" METAL FURRING CHANNEL WITH W.R. BOARD ON THE TOILET SIDE.
- ⑪ TOILET
- ⑫ SOLID SURFACE COUNTERTOP WITH INTEGRAL SINK
- ⑬ CONVEYOR ABOVE, SEE MECHANICAL DRAWING- TYP.
- ⑭ RETAINING WALL, SEE STRUCTURAL DRAWING
- ⑮ CURB, SEE CIVIL DRAWING
- ⑯ SLUDGE HOLDING TANK, SEE STRUCTURAL DRAWING
- ⑰ EMERGENCY SHOWER/EYEWASH-TYP.
- ⑱ SURFACE MOUNTED FIRE EXTINGUISHER IN CABINET-TYP.
- ⑲ HOSE BIB AND HOSE RACK, SEE MECHANICAL DRAWINGS-TYP.
- ⑳ AIR TANK, SEE MECHANICAL DRAWINGS-TYP.
- ㉑ COMPRESSOR, SEE MECHANICAL DRAWINGS-TYP.
- ㉒ HAND DRYER
- ㉓ STAIR WITH RAILING DOWN TO PUMP ROOM, SEE STRUCTURAL DRAWINGS
- ㉔ ELECTRICAL EQUIPMENT, SEE ELECTRICAL DRAWINGS
- ㉕ 6'-0 X 7'-0" PAIR HOLLOW METAL DOOR ON METAL FRAME- TYP.



PRELIMINARY DESIGN  
NOT FOR CONSTRUCTION

REV	DESCRIPTION	ENGR	DATE	APPD	DATE

PROGRESS: 60% SUBMITTAL  
SUBMITTAL DATE: JAN 2020  
PROJECT MANAGER: P. GIORI  
DESIGNED BY: M. NGUYEN  
DRAWN BY: A. RODRIGUEZ  
CHECKED BY: M. NGUYEN



PLANS PREPARED BY:  
**MBN GROUP**  
Tel: 818.661.1999  
3751 Quail Drive  
Suite 100  
Cost Mesa, CA 92626



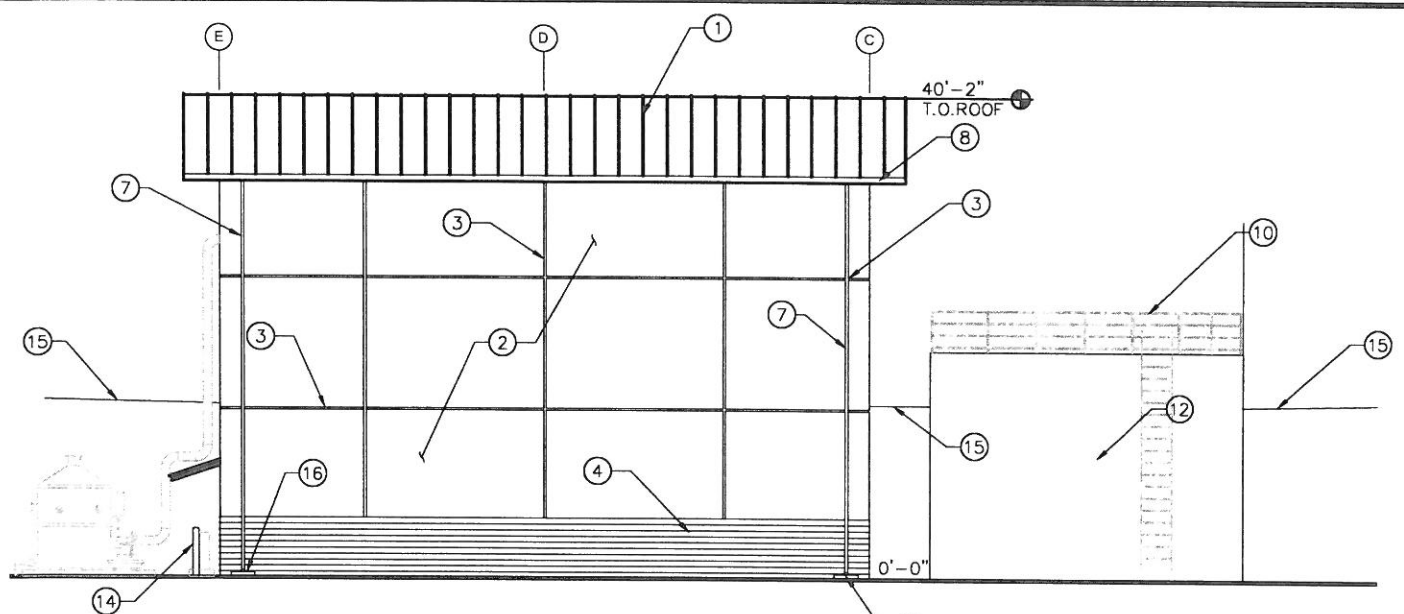
**Crestline Sanitation District**  
24516 Lake Drive, (P.O. Box 3395)  
Crestline, California 92325-3395  
909.338.1751 Fax 909.338.5306

CRESTLINE SANITATION DISTRICT  
**HUSTON CREEK WWTP PRIMARY CLARIFIER AND DEWATERING BUILDING IMPROVEMENTS**

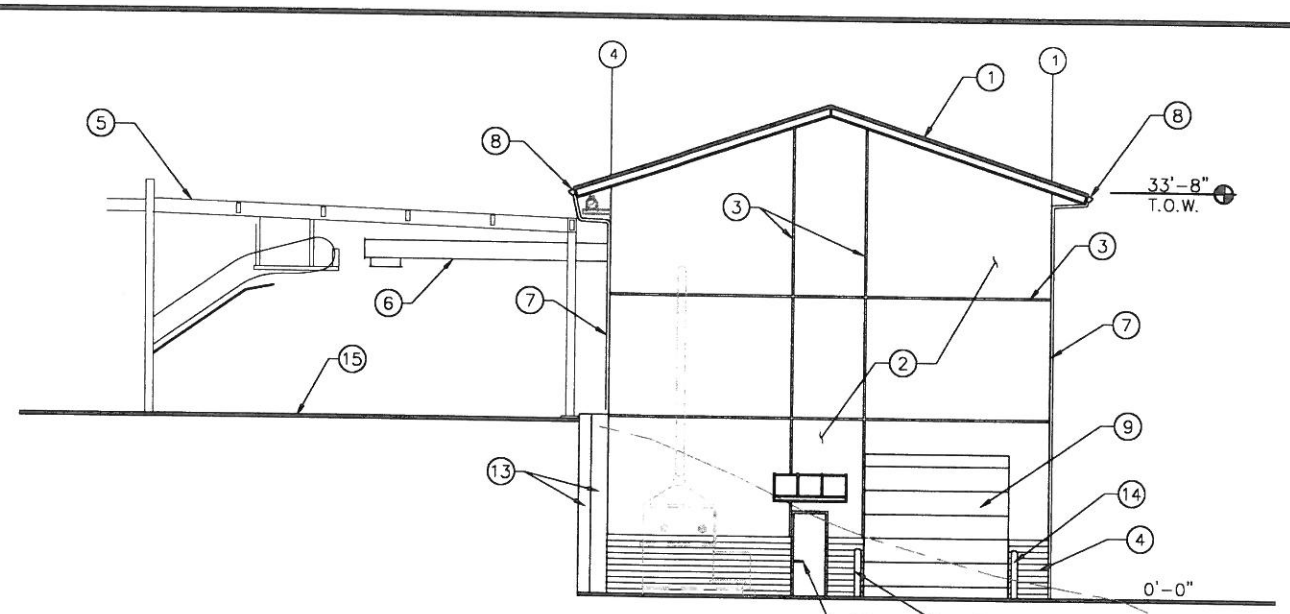
DEWATERING BUILDING  
UPPER LEVEL FLOOR PLAN

**A-2**  
PROJECT NO. 11652  
DWG. NO. 29 of 145

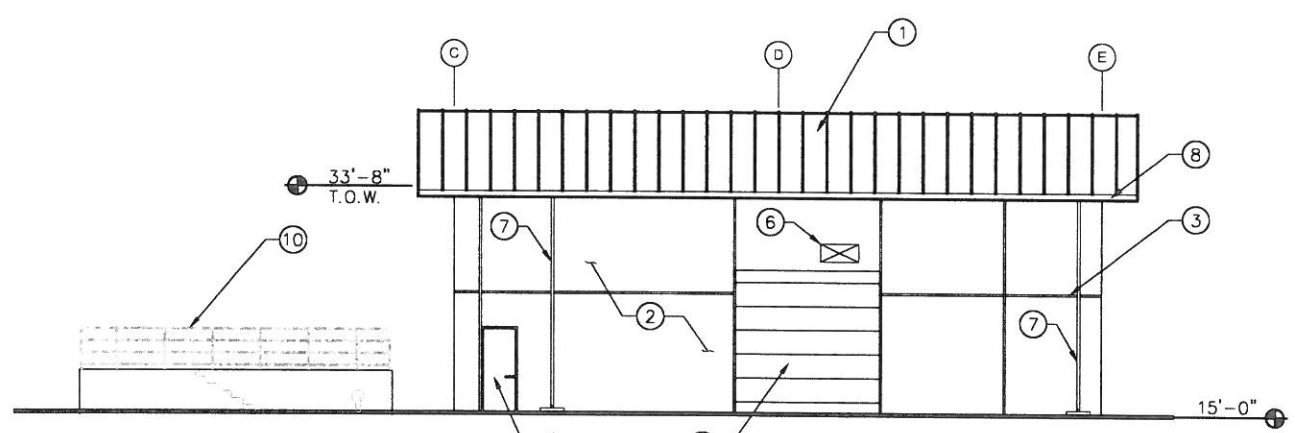
C:\MBN GROUP\PROJECTS\1904-Crestline-Houston-Creek-Design\Drawings\11652-X-ARCH-PLANS-SET 1/27/2020 3:20 PM



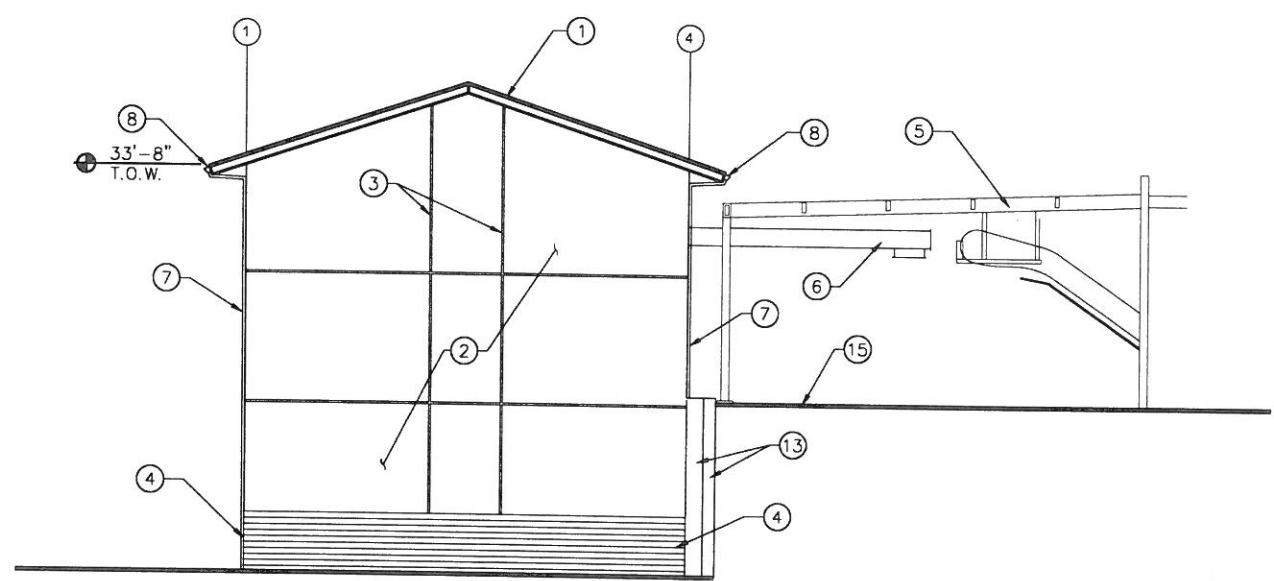
**EXTERIOR ELEVATION- NORTH**  
SCALE: 1/8" = 1'-0"  
1  
A-1, A-2



**EXTERIOR ELEVATION- EAST**  
SCALE: 1/8" = 1'-0"  
2  
A-1, A-2



**EXTERIOR ELEVATION- SOUTH**  
SCALE: 1/8" = 1'-0"  
3  
A-1, A-2



**EXTERIOR ELEVATION- WEST**  
SCALE: 1/8" = 1'-0"  
4  
A-1, A-2

**KEY NOTES:**

- ① STANDING SEAM METAL ROOFING- TYP.
- ② CONCRETE WALL SMOOTH FINISHED -SEE STRUCT. DWGS-TYP.
- ③ 2" X 1/4" DEEP CONCRETE REVEAL-TYP.
- ④ 5'-0" HIGH CORRUGATED CONCRETE @ BASE-TYP.
- ⑤ EXISTING STRUCTURE TO REMAIN
- ⑥ CONVEYOR, SEE MECHANICAL DRAWINGS
- ⑦ ROOF DRAIN- TYP.
- ⑧ ROOF GUTTER- TYP.
- ⑨ POWER OPERATED OVERHEAD COILING DOOR- TYP.
- ⑩ RAILING- SEE STRUCTURAL DRAWINGS
- ⑪ 3'-0 X 7'0" HOLLOW METAL DOOR ON METAL FRAME- TYP.
- ⑫ ACCESS LADDER, SEE STRUCTURAL DRAWINGS
- ⑬ RETAINING WALL, SEE STRUCTURAL DRAWING
- ⑭ CONCRETE FILLED METAL BOLLARD- TYP.
- ⑮ FINISH PAVING BEYOND
- ⑯ CONC. SPLASH PAD @ EA. DOWNSPOUT- TYP.

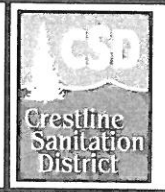
PRELIMINARY DESIGN  
NOT FOR CONSTRUCTION

REV	DESCRIPTION	ENGR	DATE	APPD	DATE

PROGRESS: 60% SUBMITTAL  
SUBMITTAL DATE: JAN 2020  
PROJECT MANAGER: P. GIORI  
DESIGNED BY: M. NGUYEN  
DRAWN BY: A. RODRIGUEZ  
CHECKED BY: M. NGUYEN



PLANS PREPARED BY:  
**MBN GROUP**  
Tel: 619.441.1990  
9555 Oxnard Drive  
Suite 110  
Van Nuys, CA 91411



**Crestline Sanitation District**  
24516 Lake Drive, (P.O. Box 3395)  
Crestline, California 92325-3395  
909.338.1751 Fax 909.338.5306

CRESTLINE SANITATION DISTRICT  
**HUSTON CREEK WWTP PRIMARY CLARIFIER  
AND DEWATERING BUILDING IMPROVEMENTS**

DEWATERING BUILDING  
EXTERIOR ELEVATIONS

**A-6**  
PROJECT NO.  
11652  
DWG. NO. 33 of 145